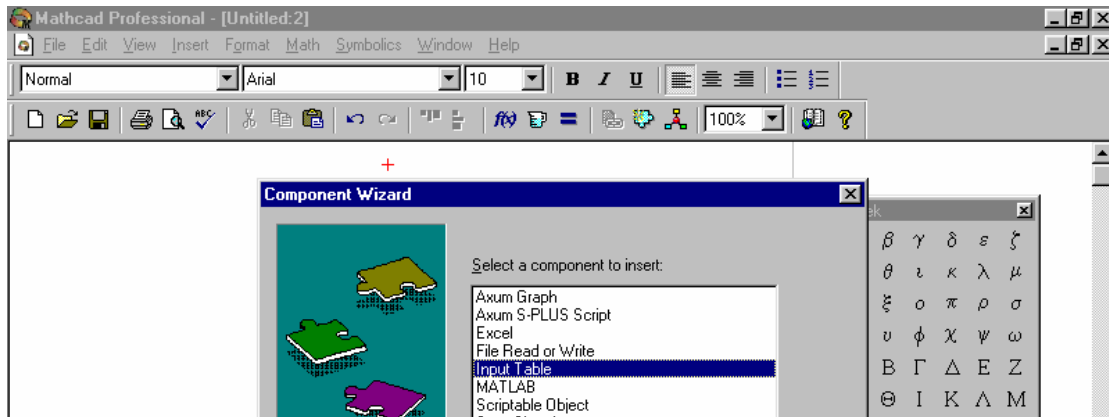


CREATING A SIMPLE X – Y PLOT OF RAW DATA ON MATHCAD

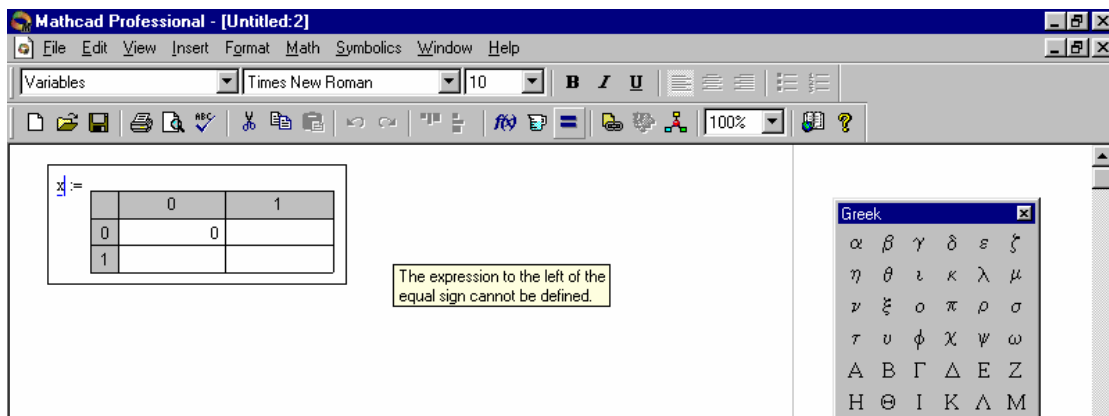
STEP 1

On the tool bar go to INSERT and then COMPONENT and then INPUT TABLE



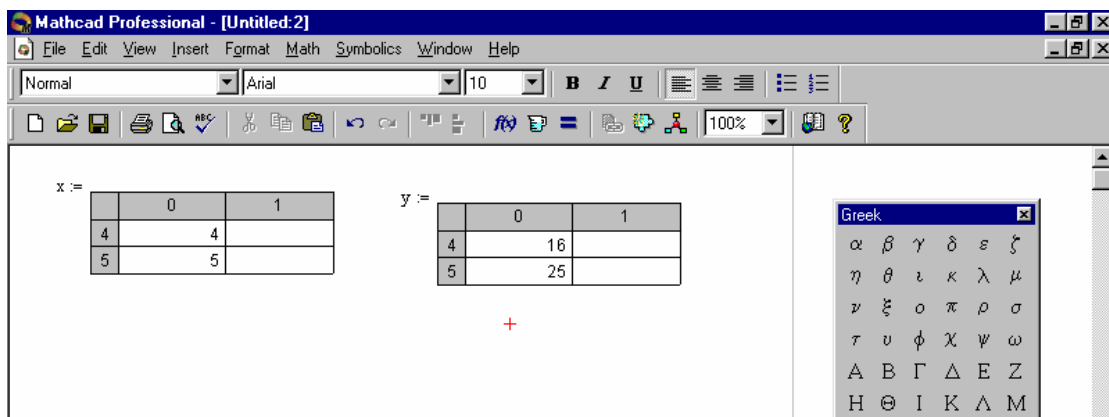
STEP 2

Click on FINISH and a table appears with two columns. Enter x for the x axis in the box top left and position table wherever you wish it to go.



STEP 3

Repeat step 2 but this time enter y for the variable. Enter data to be plotted in columns zero or column 1.



STEP 4

Position cursor where you want the graph to appear and use the short cut $x@y$ to instantly produce a plot of x values against y values. Format the graph in the usual way.

The screenshot displays the Mathcad Professional interface. At the top, the menu bar includes File, Edit, View, Insert, Format, Math, Symbolics, Window, and Help. The toolbar contains various icons for file operations, editing, and formatting. The main workspace shows two data tables and a graph.

The first table is labeled $x :=$ and contains the following data:

	0	1
4	4	
5	5	

The second table is labeled $y :=$ and contains the following data:

	0	1
4	16	
5	25	

The graph shows a red curve plotted on a green grid. The x-axis is labeled 'x' and ranges from 0 to 5. The y-axis is labeled 'y' and ranges from 0 to 30. The curve starts at the origin (0,0) and increases, passing through points (1,1), (2,4), (3,9), (4,16), and (5,25). A red '+' sign is visible to the right of the graph.

On the right side of the workspace, there are two floating windows: 'Greek' and 'Graph'. The 'Greek' window displays a grid of Greek letters. The 'Graph' window displays various graphing tools.

The status bar at the bottom indicates 'Press F1 for help.' and 'Page 1'. The taskbar shows the Start button, an open window titled 'CREATING A SIMPLE Xy...', the Mathcad Professional application, and the Mathcad Help icon. The system clock shows 13:33.